

MONTHLY MEMBERSHIP PROGRESS REPORT

District 201Q4

Results as of: 5/31/2026

GMT:

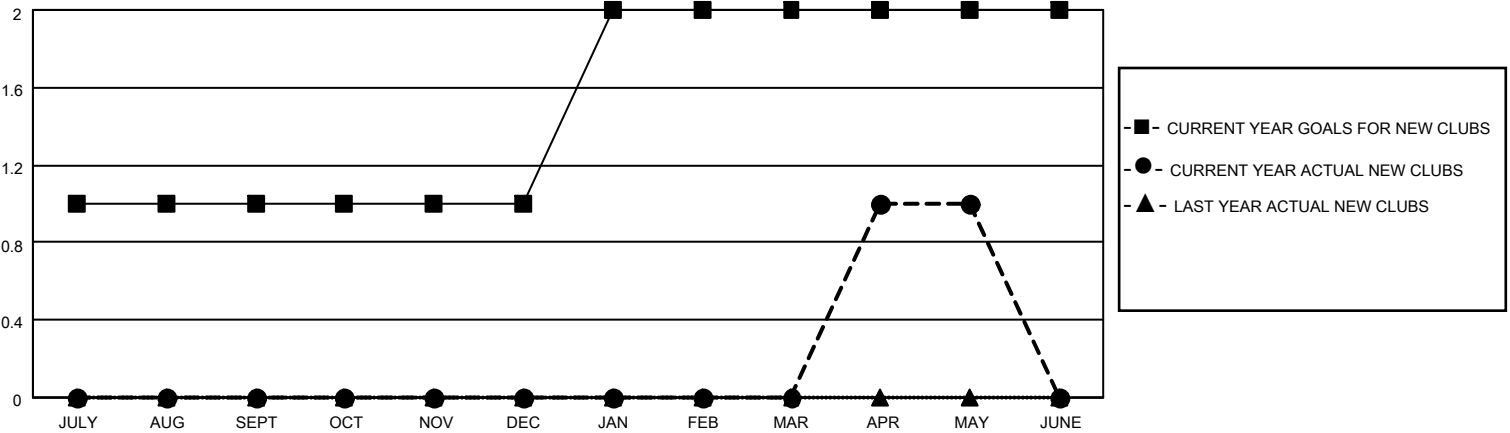
LOCATION AUSTRALIA

GMT CA

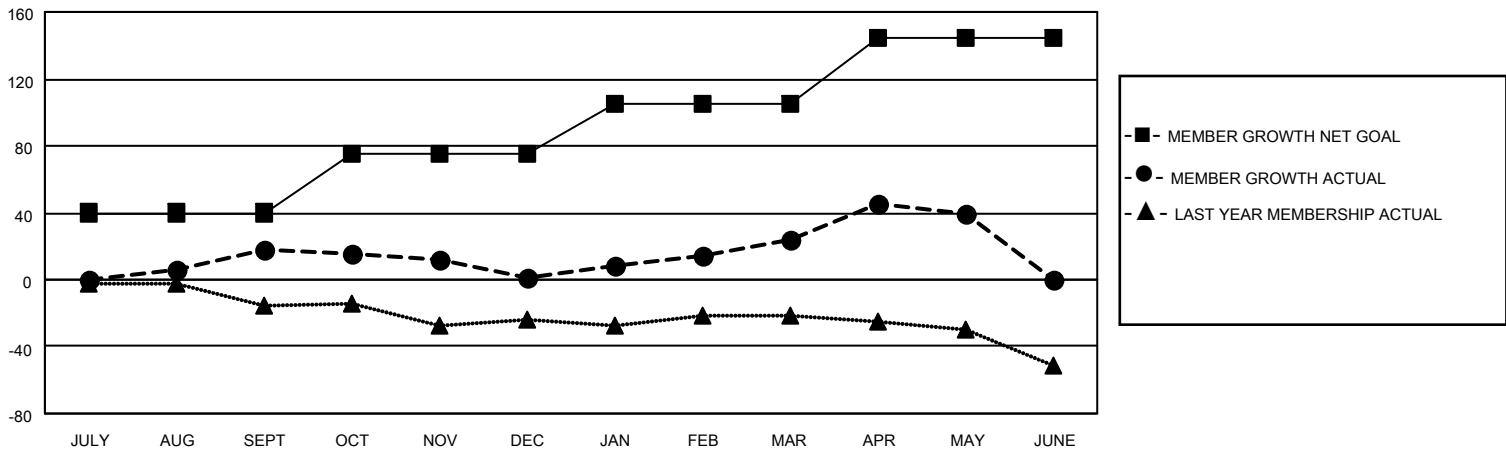
| Clubs | | | |
|-----------------------|---------------|-----------|---------------|
| RESULTS FOR 2025-2026 | | | |
| QUARTER | NEW CLUB GOAL | NEW CLUBS | DROPPED CLUBS |
| JULY/AUG/SEPT | 1 | 0 | 0 |
| OCT/NOV/DEC | 0 | 0 | 0 |
| JAN/FEB/MAR | 1 | 0 | 0 |
| APR/MAY/JUNE | 0 | 1 | 0 |

| Members | | | |
|-----------------------|------------------------|----------------------|--|
| RESULTS FOR 2025-2026 | | | |
| QUARTER | MEMBER GROWTH NET GOAL | MEMBER GROWTH ACTUAL | DROPPED MEMBERS ACTUAL (including transfers) |
| JULY/AUG/SEPT | 40 | 39 | 20 |
| OCT/NOV/DEC | 35 | 22 | 32 |
| JAN/FEB/MAR | 30 | 45 | 20 |
| APR/MAY/JUNE | 40 | 50 | 30 |

GOALS AND ACTUAL NEW CLUBS CUMULATIVE



GOALS AND ACTUAL MEMBERS CUMULATIVE



| | | |
|------------------------|---|-------------------------------------|
| DROPPED CLUBS: 0 | 31 CLUBS OF 59 ADDED 1 OR MORE NEW MEMBERS | GENDER DISTRIBUTION |
| | | MALE 530 (53.86%) |
| | | FEMALE 453 (46.04%) |
| DROPPED MEMBERS | CLICK HERE FOR CUMULATIVE MEMBERSHIP DATA | TOTAL FAMILY UNIT MEMBERS 204 |
| DECEASED 8 | | FAMILY MEMBERS PAYING HALF DUES 103 |
| CLUB CANCELLED 0 | | |
| OTHER 94 | | |
| TOTAL 102 | | |